

PUMPKin ViNE



Friends of Port Elliot Community Garden - Newsletter

Vol 3 Winter-Spring 2023

Rest assured, even though we have been a bit tardy on delivery of the newsletter (missed Autumn altogether), our Community Garden is flourishing, and we welcome all members to take advantage of it. Up to now, a lot of our activity has been applying for grants, gratefully receiving donations, establishing the infrastructure of the garden, and experimenting with several vegetable and flower crops. However, we will soon have a fully operational garden (all 21+ beds) and meeting shed for social activities...the 'community' part of the garden. The PECG Facebook page welcomes new members and posts a photographic record of progress & activities in the garden.

The Long-awaited Shed

The slab for the shed went down on 5 September and we expect the shed itself will be erected in the first week of October. We plan to have a celebratory opening of the shed on some sunny weekend in October or early November; you will be notified.



The shed is important for so many reasons, not just for storing stuff. To the north of the shed will be shady pergola and paved area sheltered from the wind. Around this area will be smaller specialty gardens: culinary herbs, bushfoods, succulents...whatever you, as members, want to plant and nurture. Maybe even a wood-fired oven. This will be the focal point for the relaxed and friendly community of our garden.

The Fruit Orchard



The Sponsor-a-Tree program was highly successful with raising \$1,780 from 33 contributions. More than half of these donations came from people not on our email list, but who responded to a Facebook notification. It is heartening to realise the support the general community has for our garden. Member Ian Moyle took on the mammoth task of designing the orchard and buying all the trees. The full list is below. All the trees are in the ground except for the citrus which will be planted in a few weeks when the soil warms up a bit more.

List of fruit trees

Mariposa plum
Satsuma plum
O'Henry peach
Anzac peach
Alberta peach
Leprechaun apple
Fuji apple
Pinkabelle apple
Smyrna quince
Sweet temptation fig

Nashi pear
Sungold pear
Red Princess pear
Golden nectarine
Moorpark apricot
Trevatt apricot
Self-pollinating almond
Strawberry guava
Pineapple feijoa
Mulberry

Blood orange
Valencia orange
Ruby red grapefruit
Japanese seedless orange
Eureka lemon
Tahitian lime
Nagami cumquat

Currently the trees are protected with individual cages which we can drape shade cloth over to protect from birds and scorching sun. We have plans for shade cloth canopy to cover the full orchard, but that can wait until next year's grant application season.

Donations in and out

Apart from the fruit trees, some significant donations to the garden since last newsletter have been:

- Diggermate, 3/77 Hill St, Port Elliot: for loan of their bobcat to level the site and load soil into beds.

- Stan Woods: long term loan of cement mixer and paver barrow, and the essential use of his auger for digging tree holes.
- Daryl Finch: garden fence panels
- Linda & Keith Morris, Elliot Gardens, for pavers and garden blocks.

We have also received generous discounts from the following local businesses:

- DSM Landscape on Waterport Road
- Goolwa Irrigation on Gardiner Street
- Mitre 10 on Brickyard Road

Donations haven't been all one way. The garden gave a load of pumpkins from last summer to Three Angel's Mission & the Salvation Army for their charity meals and we have been regularly leaving garden greens on the Grow Free Cart in Port Elliot. As the garden grows, we hope to expand our activities in this area. We welcome all ideas on how to go about it.

Most significant thank you

Our community garden is run by a dedicated committee who regularly meet to steer and organise activities. Without a question, the most significant member who has led us through the establishment phase has been our chairperson, Elizabeth Ganguly. Elizabeth not only designed the garden but was our front line of communication with Alexandrina council. She also had access to some amazing contractors who helped us with fencing (David Inverarity) and installing the gardens system of pipes and taps (Colin Foster). This has been a big year for Elizabeth with the passing of her beloved husband Barry and caring for her father in Mudgee NSW. She has also recently entered the joyful world of grandparenting. No wonder she has had little time for the lead role in a community garden.

We thank you Elizabeth from the depths of our hearts for your vision, enthusiasm, organising skills and unrelenting energy. We welcome you to the role of 'general member' and look forward to enjoying the garden with you.

And we welcome Frodo Krochmal as the new chairperson. May he control our rambling committee meetings with his characteristic good humour.

Membership

September is the time of year when we collect our 2023-2024 membership subscriptions.

It is \$35 to be paid into the account of the Port Elliot Town & Foreshore Improvement Association (PETFIA). The membership form for new members and for renewals can be found on the PETFIA website.

Account Name: Port Elliot Town & Foreshore Improvement Assoc Inc

BSB: 633 000

Account number: 146 741 913

\$10 covers your insurance while on the property, and the other \$25 will pay for water etc.

Those members who have joined since May 2023 are included in the 2023-2024 membership.

Please renew your membership. If you are not sure of your membership status (as this newsletter will go out to our larger email list) then ask Ian Nuberg (contact details below)

Garden Access

We notice there are many members who cannot attend our Thursday morning open days (and not just because it has been raining). We want to open the garden to be equally accessible to all members. Sometime on the weekend may suit a lot of people, but when?

Help us decide good alternative opening times but sending an email to

secretary.fpecg@gmail.com

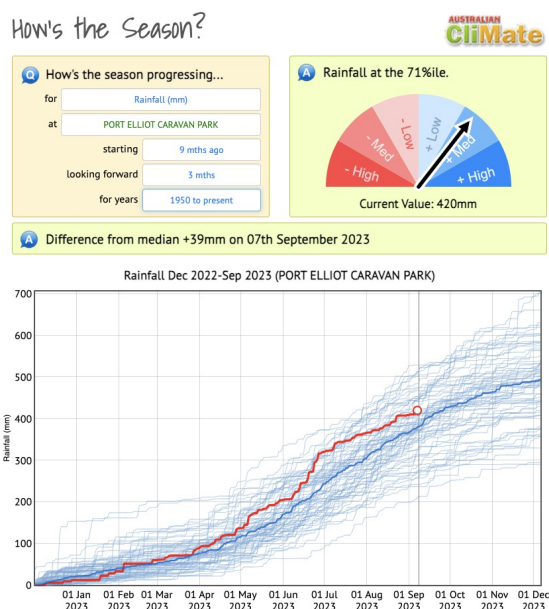
indicating your preferences for

- Saturday morning or afternoon, Sunday morning or afternoon
- Other weekday mornings and afternoons.

Apart from our regular gatherings, every paid-up member has a right to access the garden whenever they like to pick a few greens and flowers. The gate has a coded lock which we change every season. If you want to know what the code is just ask Ian Nuberg or one of the committee members listed at bottom of the newsletter

How's the season?

It is strange how so many of our Thursday working days have been rainy days. You will be correct in feeling like it's been extra wet this year. The red line in this chart is the cumulative rainfall since the beginning of this year. The fine blue lines are seasonal data for each year since 1950, and the heavy blue line is the average. So, it has been a wet year, but believe it or not, there have been plenty wetter (e.g. 1963-64)!



www.climateapp.net.au

Contributors to this newsletter

Ian Nuberg mobile: 0421 144 671 or iannuberg54@gmail.com



Port Elliot
TOWN & FORESHORE IMPROVEMENT ASSOCIATION INC.